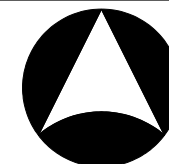


NOTES

1. ALL DIMENSIONS IN MILLIMETRES (mm) UNLESS NOTED
2. PIPE DIAMETER (D) = 450 MAX.
3. PRECAST COMPONENTS ENCOURAGED WHERE AVAILABLE
4. ANGLE LINTEL TO BE HOT DIPPED GALVANISED MILD STEEL
5. MAX. DEPTH TO BE 1000 - DICTATED BY COVER
6. PITS CAN BE USED FOR CHANGE OF PIPE GRADE OR DIRECTION WHERE SUITABLE HYDRAULIC CONDITIONS EXIST
7. PIT TO BE CONSTRUCTED FROM N25 CONCRETE

INSTITUTE OF PUBLIC WORKS ENGINEERING AUSTRALIA
TASMANIA DIVISION Inc. - 2003 DISCLAIMER.

The authors and sponsoring organisations shall have no liability or responsibility to the user or any other person or entity with respect to any liability, loss or damage caused or alleged to be caused, directly or indirectly, by the adoption and use of these Standard Drawings including, but not limited to, any interruption of service, loss of business or anticipatory profits, or consequential damages resulting from the use of these Standard Drawings. Persons must not rely on these Standard Drawings as equivalent of, or a substitute for, project-specific design and assessment by an appropriately qualified professional.



INSTITUTE OF
PUBLIC WORKS
ENGINEERING
AUSTRALIA
TASMANIA DIVISION

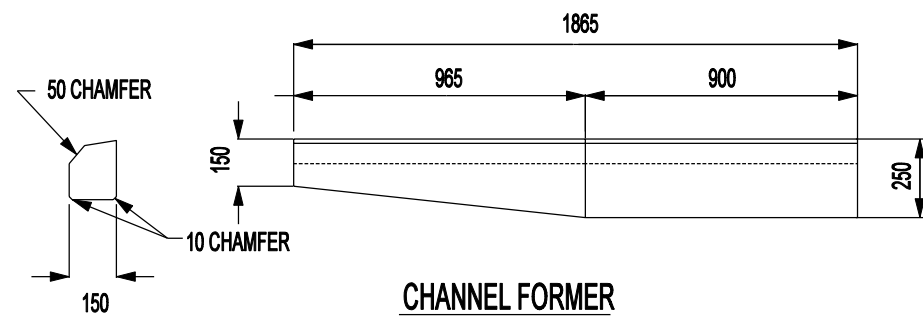
DRAWING TITLE

TASMANIAN COUNCILS' SUBDIVISION STANDARD DRAWING
STORMWATER - SINGLE GRATED PIT

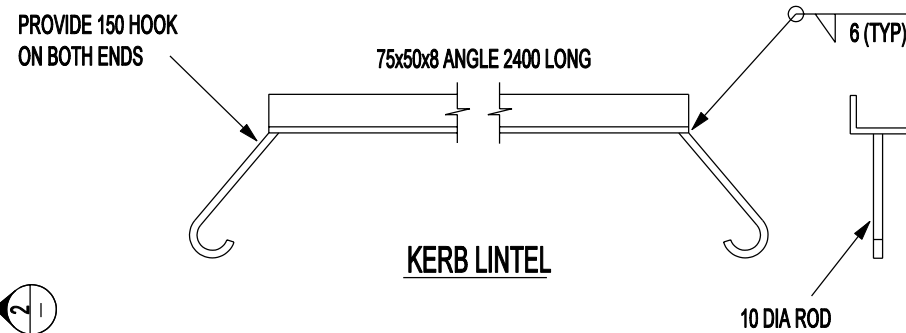
SCALE
NOT TO SCALE

VERSION 2
1 JANUARY 2007

DRAWING NO.
SD-2001



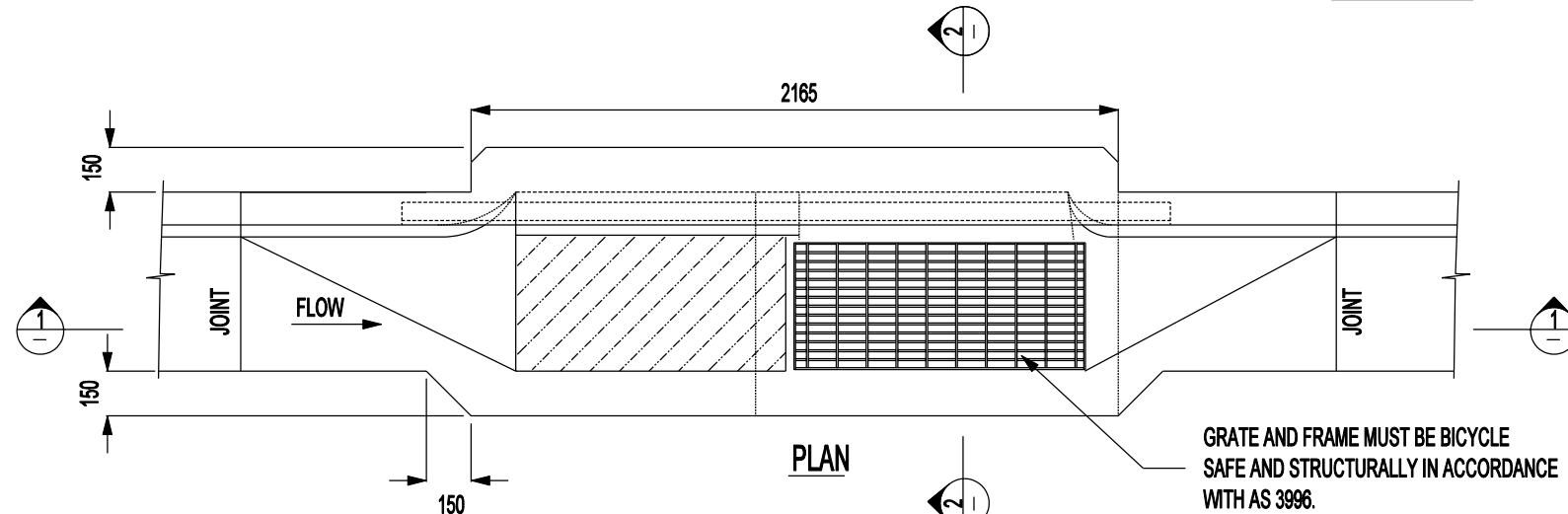
CHANNEL FORMER



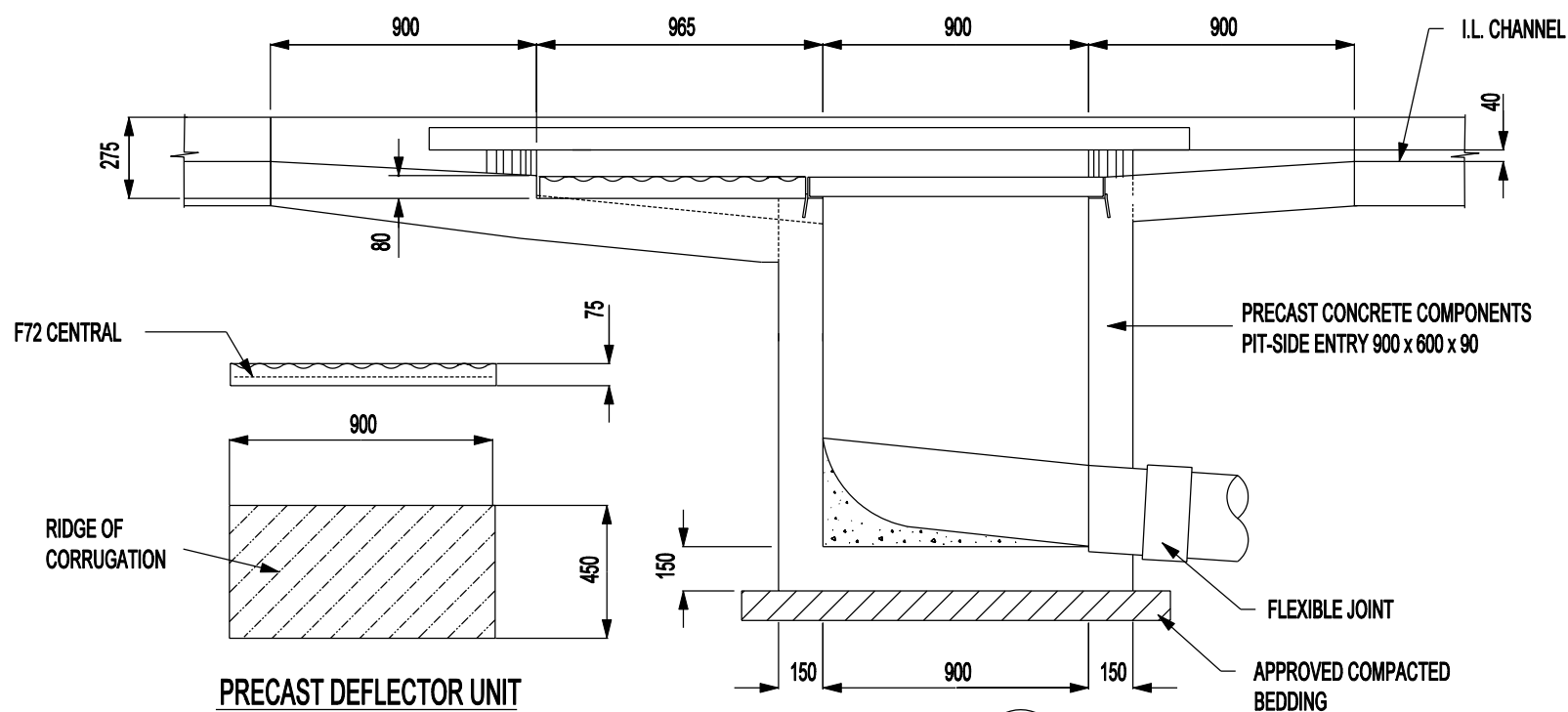
KERB LINTEL

NOTES

1. ALL DIMENSIONS IN MILLIMETRES (mm) UNLESS NOTED
2. PIPE DIAMETER (D) = 450 MAX.
3. PRECAST COMPONENTS ENCOURAGED WHERE AVAILABLE
4. ANGLE LINTEL TO BE HOT DIPPED GALVANISED MILD STEEL
5. MAX. DEPTH TO BE 1000 - DICTATED BY COVER
6. PITS CAN BE USED FOR CHANGE OF PIPE GRADE OR DIRECTION WHERE SUITABLE HYDRAULIC CONDITIONS EXIST
7. PIT TO BE CONSTRUCTED FROM N25 CONCRETE



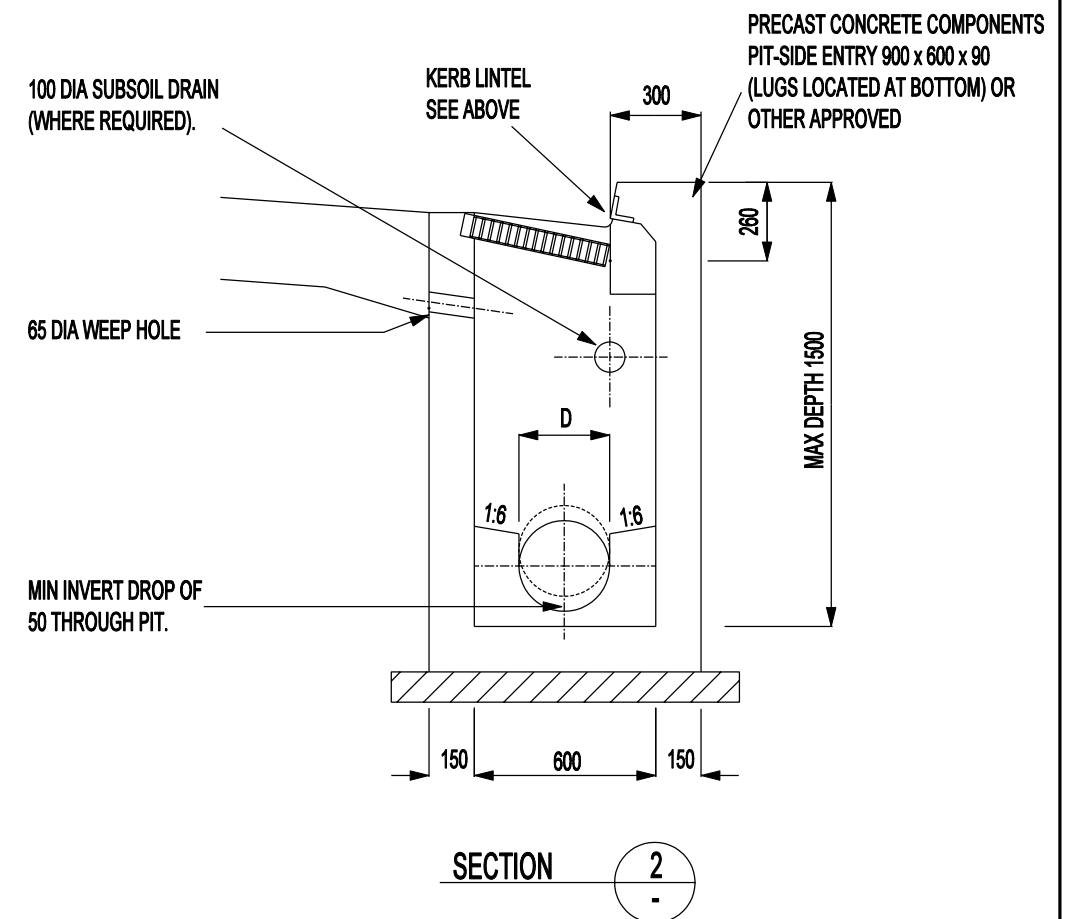
PLAN



SECTION 1

PRECAST DEFLECTOR UNIT

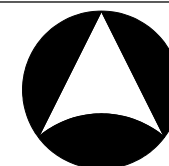
DEFLECTOR UNITS USING C.G.I. AS A BASE FOR A MOULD.



SECTION 2

INSTITUTE OF PUBLIC WORKS ENGINEERING AUSTRALIA
TASMANIA DIVISION Inc. - 2003 DISCLAIMER.

The authors and sponsoring organisations shall have no liability or responsibility to the user or any other person or entity with respect to any liability, loss or damage caused or alleged to be caused, directly or indirectly, by the adoption and use of these Standard Drawings including, but not limited to, any interruption of service, loss of business or anticipatory profits, or consequential damages resulting from the use of these Standard Drawings. Persons must not rely on these Standard Drawings as equivalent of, or a substitute for, project-specific design and assessment by an appropriately qualified professional.



INSTITUTE OF
PUBLIC WORKS
ENGINEERING
AUSTRALIA
TASMANIA DIVISION

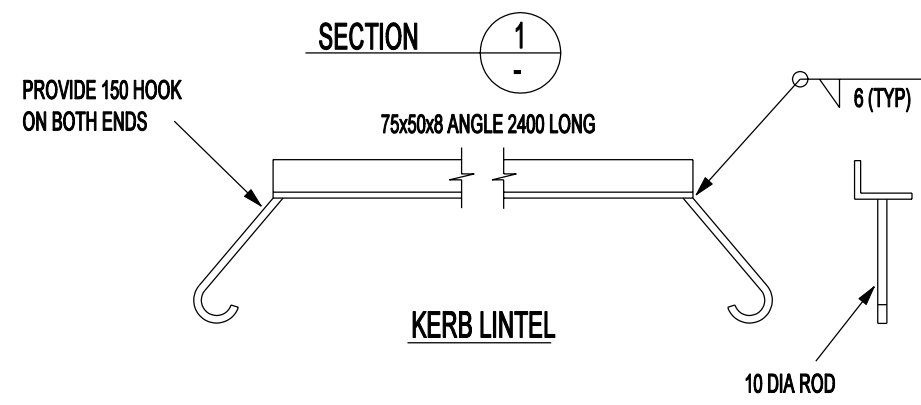
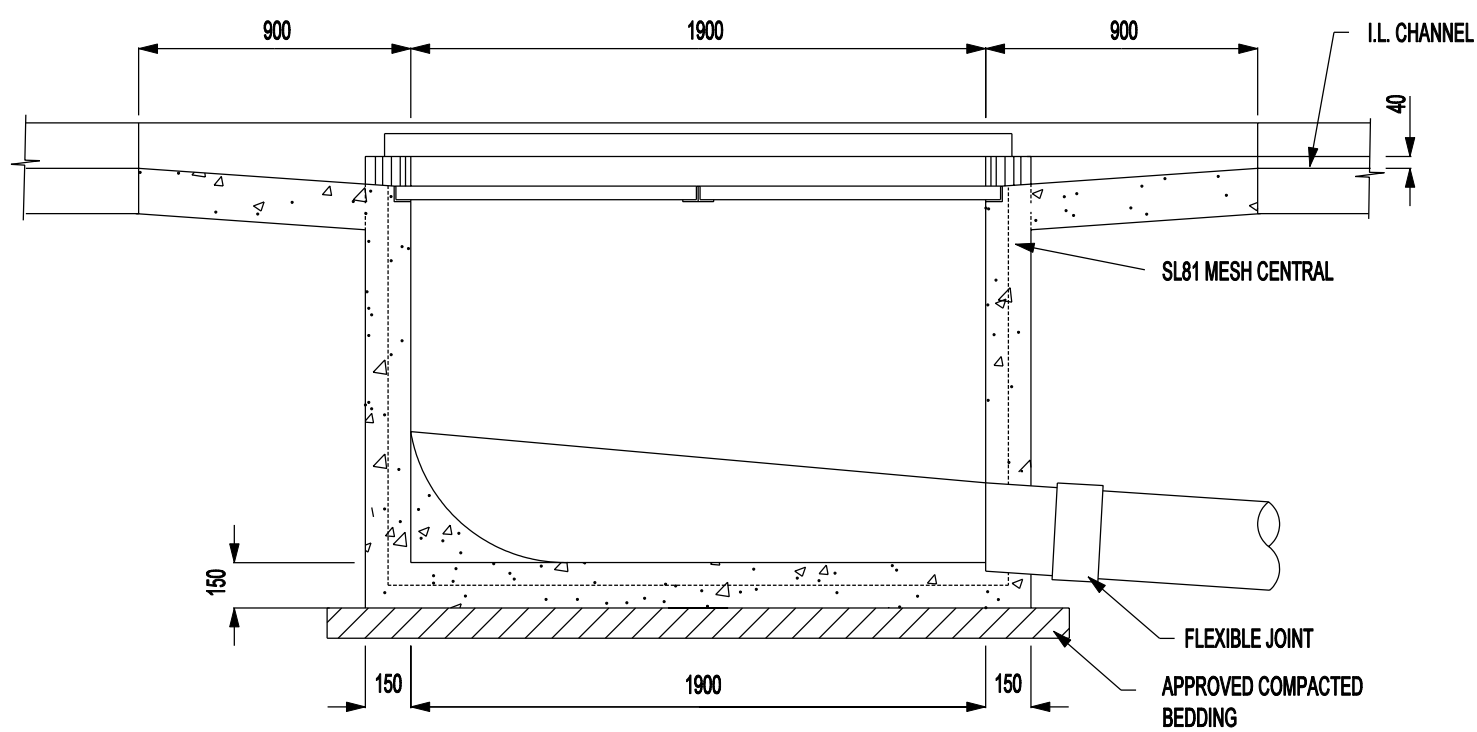
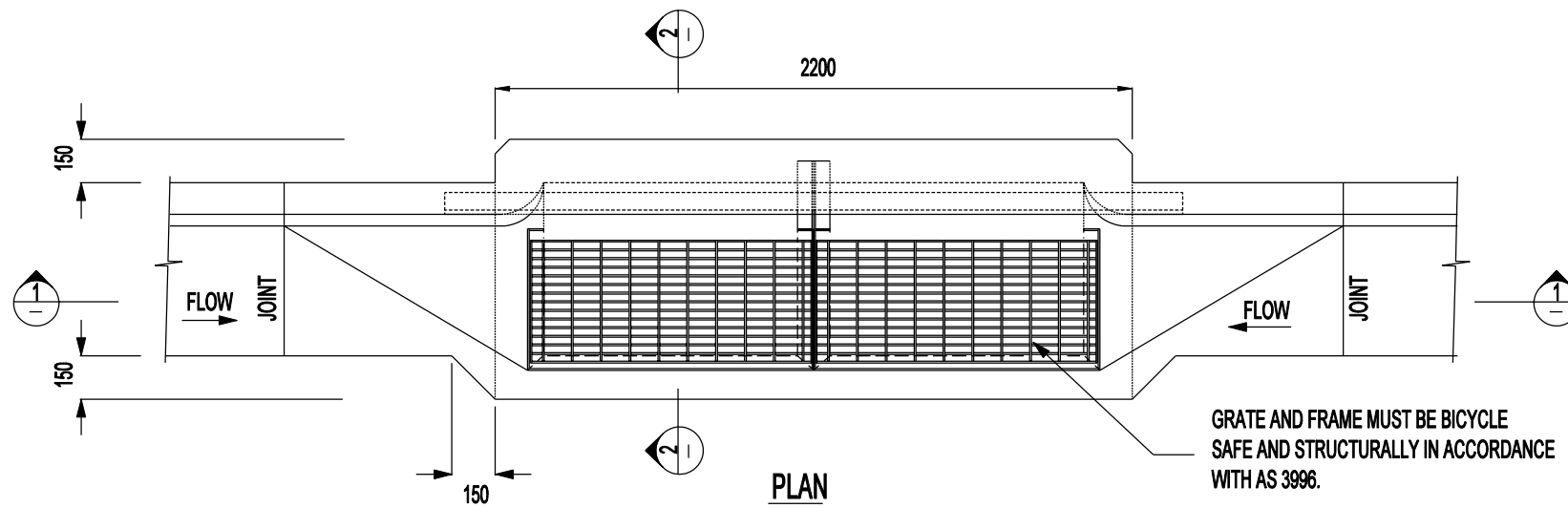
DRAWING TITLE

TASMANIAN COUNCILS' SUBDIVISION STANDARD DRAWING
STORMWATER - GRATED DEFLECTOR PIT

SCALE
NOT TO SCALE

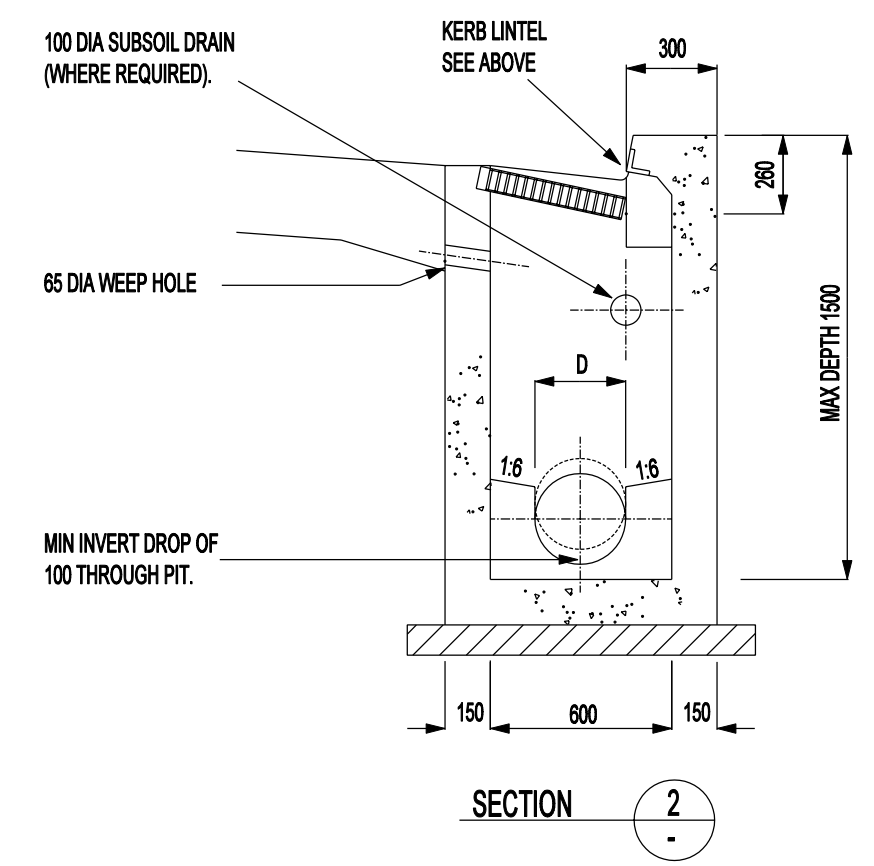
VERSION 2
1 JANUARY 2007

DRAWING NO.
SD-2002

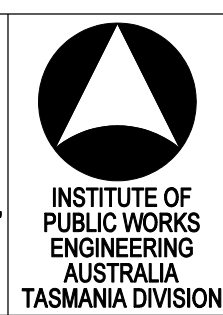


NOTES

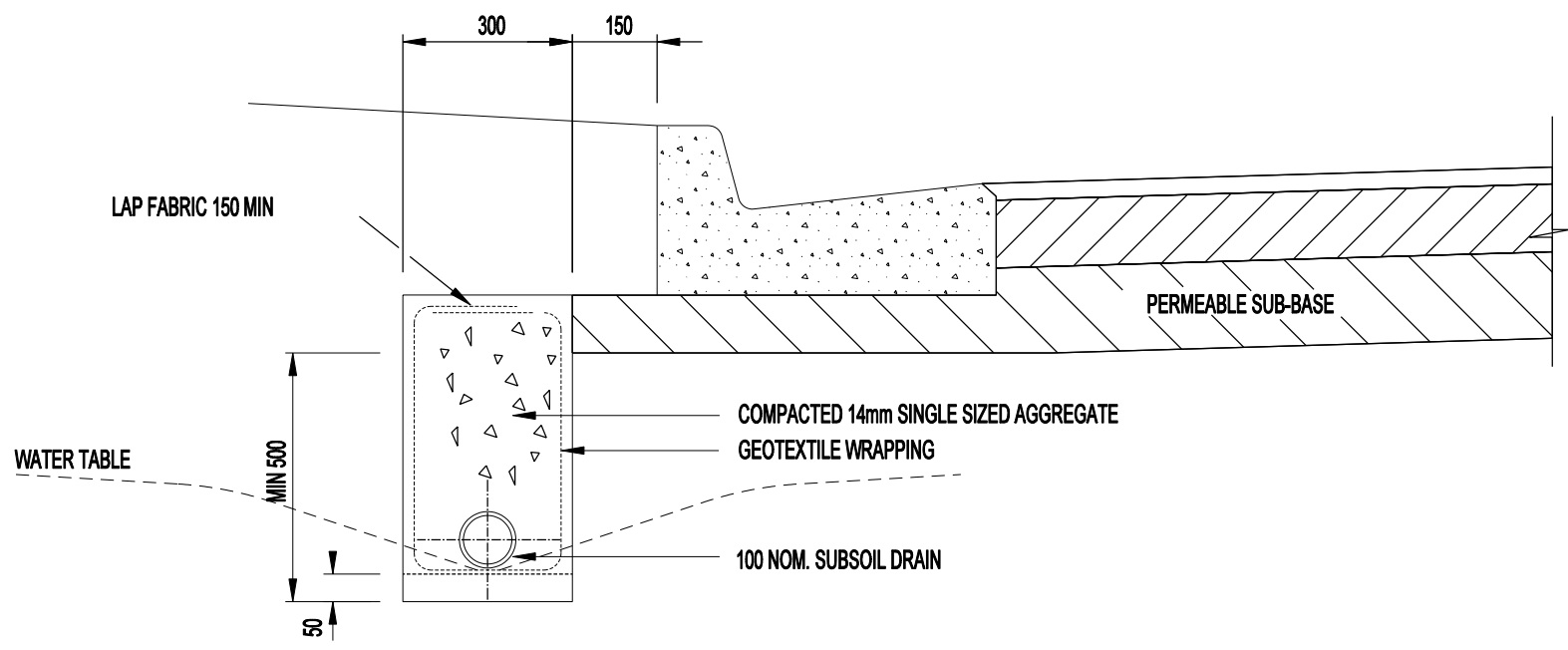
1. ALL DIMENSIONS IN MILLIMETRES (mm) UNLESS NOTED
2. PIPE DIAMETER (D) = 450 MAX.
3. PRECAST COMPONENTS ENCOURAGED WHERE AVAILABLE
4. ANGLE LINTEL TO BE HOT DIPPED GALVANISED MILD STEEL
5. MAX. DEPTH TO BE 1000 - DICTATED BY COVER
6. PITS CAN BE USED FOR CHANGE OF PIPE GRADE OR DIRECTION WHERE SUITABLE HYDRAULIC CONDITIONS EXIST
7. PIT TO BE CONSTRUCTED FROM N25 CONCRETE



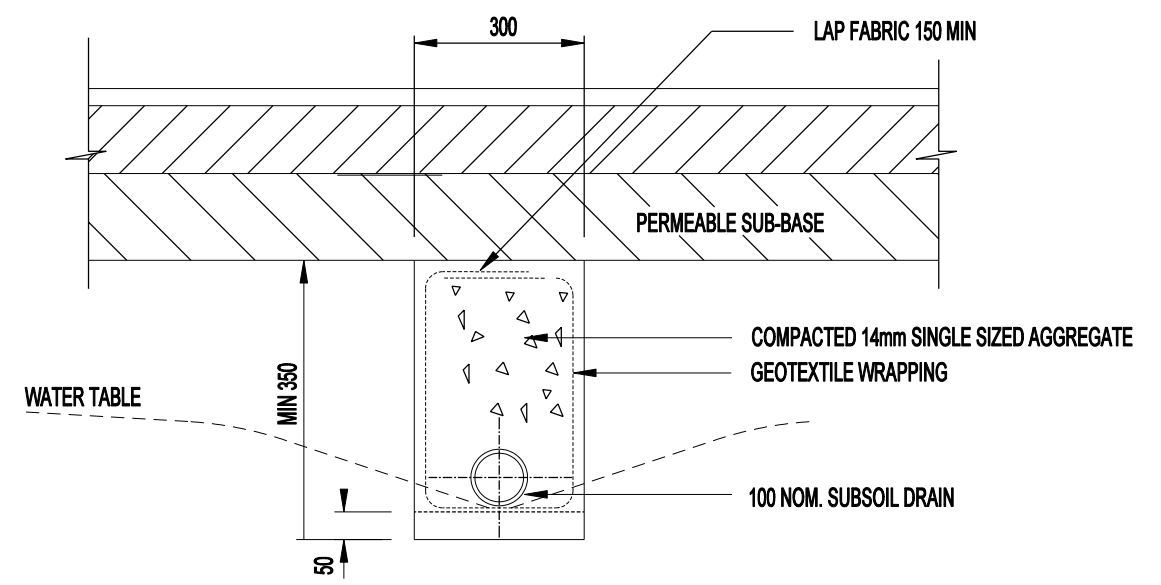
INSTITUTE OF PUBLIC WORKS ENGINEERING AUSTRALIA TASMANIA DIVISION Inc. - 2003 DISCLAIMER.
 The authors and sponsoring organisations shall have no liability or responsibility to the user or any other person or entity with respect to any liability, loss or damage caused or alleged to be caused, directly or indirectly, by the adoption and use of these Standard Drawings including, but not limited to, any interruption of service, loss of business or anticipatory profits, or consequential damages resulting from the use of these Standard Drawings. Persons must not rely on these Standard Drawings as equivalent of, or a substitute for, project-specific design and assessment by an appropriately qualified professional.



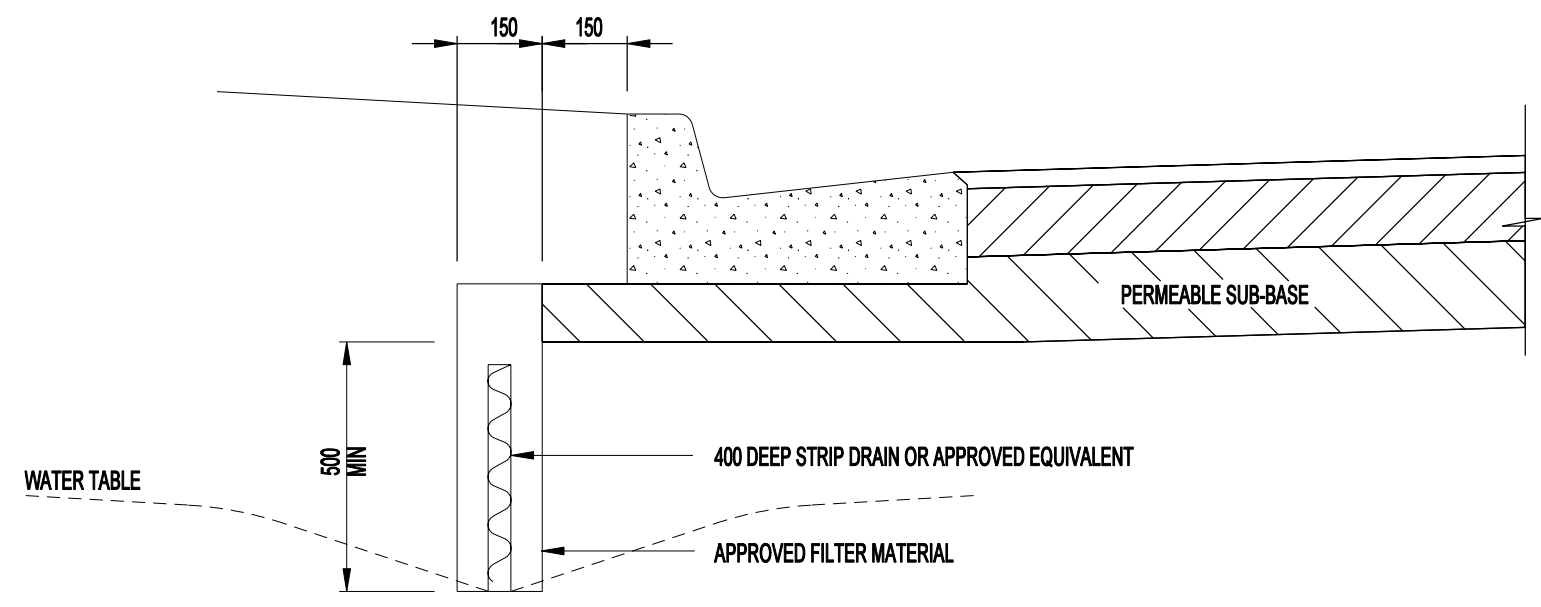
DRAWING TITLE TASMANIAN COUNCILS' SUBDIVISION STANDARD DRAWING STORMWATER - DOUBLE GRATED PIT		
SCALE NOT TO SCALE	VERSION 2 1 JANUARY 2007	DRAWING NO. SD-2003



SUBSOIL DRAIN BEHIND KERB



SUBSOIL DRAIN UNDER PAVEMENT

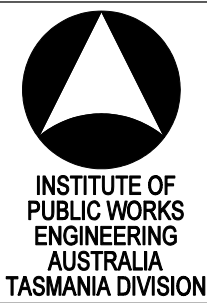


STRIP DRAIN BEHIND KERB

NOTES

1. ALL DIMENSIONS IN MILLIMETRES (mm) UNLESS NOTED
2. SUBSOIL DRAINS SHALL BE INSTALLED IN LOCATIONS WHERE THE ROAD FORMATION IS LOWER THAN THE NATURAL SURFACE
3. OTHER DRAINS, TO CONTROL EXCESS WATER UNDER THE ROADWAY SHALL BE PROVIDED
4. SUBSOIL PIPES SHALL BE CONNECTED TO STORMWATER PITS, DIRECT TO STORMWATER MAINS, OR TO OTHER APPROVED POINT OF DISPOSAL

**INSTITUTE OF PUBLIC WORKS ENGINEERING AUSTRALIA
TASMANIA DIVISION Inc. - 2003 DISCLAIMER.**
The authors and sponsoring organisations shall have no liability or responsibility to the user or any other person or entity with respect to any liability, loss or damage caused or alleged to be caused, directly or indirectly, by the adoption and use of these Standard Drawings including, but not limited to, any interruption of service, loss of business or anticipatory profits, or consequential damages resulting from the use of these Standard Drawings. Persons must not rely on these Standard Drawings as equivalent of, or a substitute for, project-specific design and assessment by an appropriately qualified professional.



DRAWING TITLE TASMANIAN COUNCILS' SUBDIVISION STANDARD DRAWING STORMWATER - SUBSOIL DRAIN DETAILS		
SCALE NOT TO SCALE	VERSION 2 1 JANUARY 2007	DRAWING NO. SD-2004